



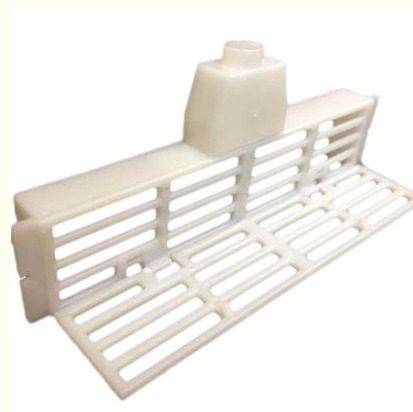
## Food Grade Plastic Anti Escape beehive entrance reducer

Our Product Introduction

for more products please visit us on [bee-keepingequipment.com](http://bee-keepingequipment.com)

### Basic Information

- Place of Origin: CHINA
- Brand Name: Bee star
- Model Number: 08HN-16-2
- Minimum Order Quantity: 200pcs
- Price: US\$0.09/ pcs---US\$0.1pcs
- Packaging Details: carton backage
- Delivery Time: 5-30 working day, depending on the order quantity
- Payment Terms: L/C, T/T, Western Union
- Supply Ability: 100000



### Product Specification

- Name: Anti-escape Entrance Reducer
- Material: Food Grade Plastic
- Item Number: 08HN-16-2
- Color: White And Grey
- Use For: Beehive Tools
- Highlight: **Anti Escape Beehive Entrance Reducer, Plastic Beehive Entrance Reducer, Plastic hive entrance reducer**



### More Images

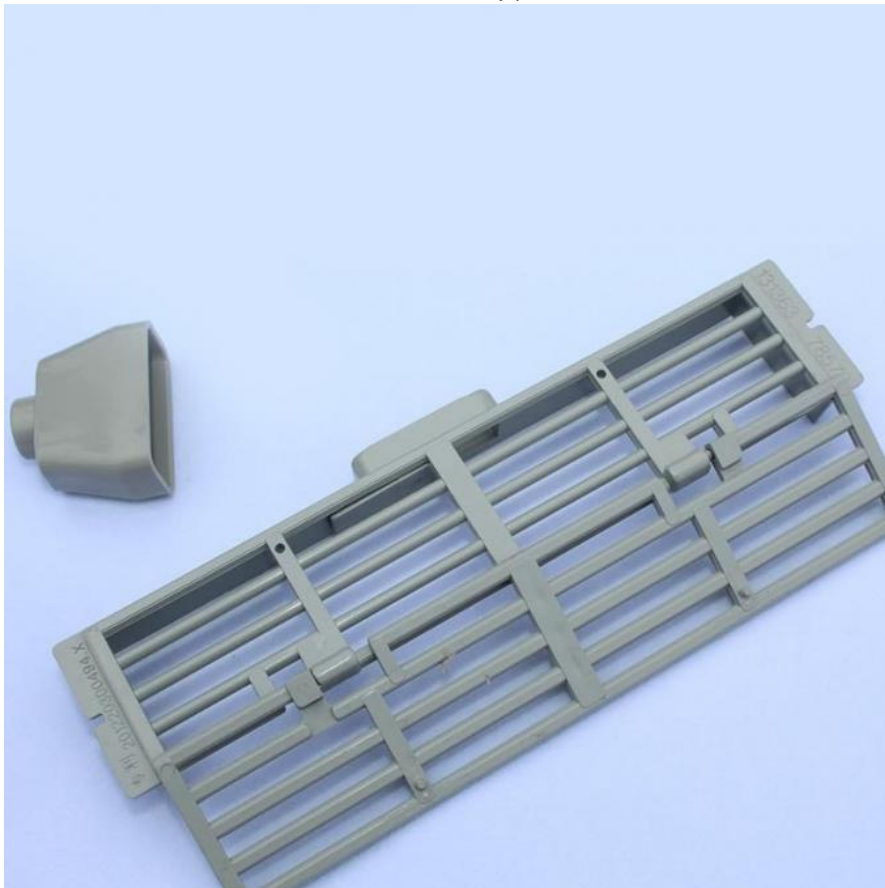


## Product Description

### Food Grade plastic anti- escape Bee Entrance Reducer

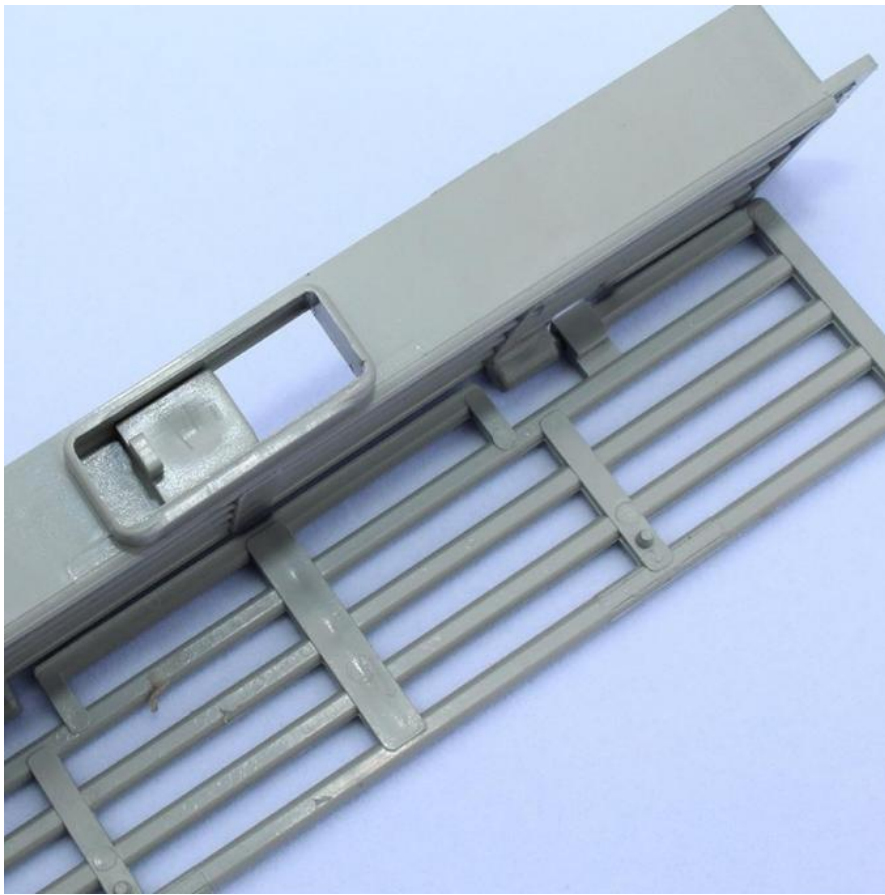
#### Anti-escape bee entrance reducer:

- 1: Compared with ordinary anti-escape type, it won't drop powder and bee is not crowded.
- 2: Drones can be released during the non-split period, It will save a lot feed.
- 3: In the mixed culture area of bee , it can effectively protect bee .



#### Instructions for use:

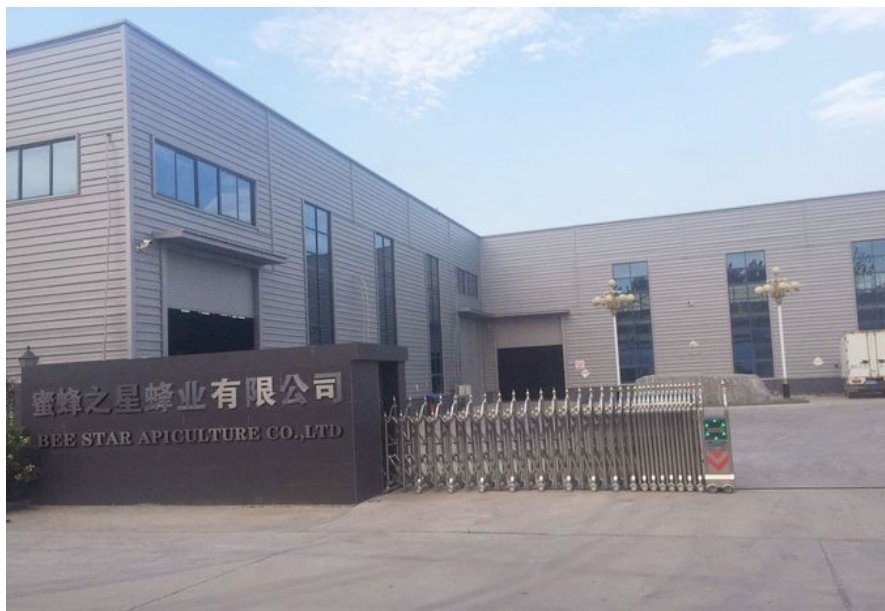
1. Know the situation of bee separation in advance, that is, clear the base on the first day of the bee inspection, and remove the drones from the first day to the fifth day. The method is to open the sliding plate on the frame and let the drone pass through the communication on the sliding plate. The bee cap flies out and cannot be returned into the box.
2. The slide should be closed from the sixth day to the 15th day to prevent the queen bee from flying out during the split bee. Check the bee colony before the new king is out to prevent the king from killing the old Queen bee.
3. The 3.7mm seam of the outer layer is used to prevent the bee from stealing the bee. When the bee is stolen, the outer layer is folded on the inner layer. It is difficult for the bee to enter, which can relieve and stop. The function of stealing bee. Without affecting the in and out of the bee.
4. It can prevent the bite of wasps and the entry of honey-stealing moths at night.





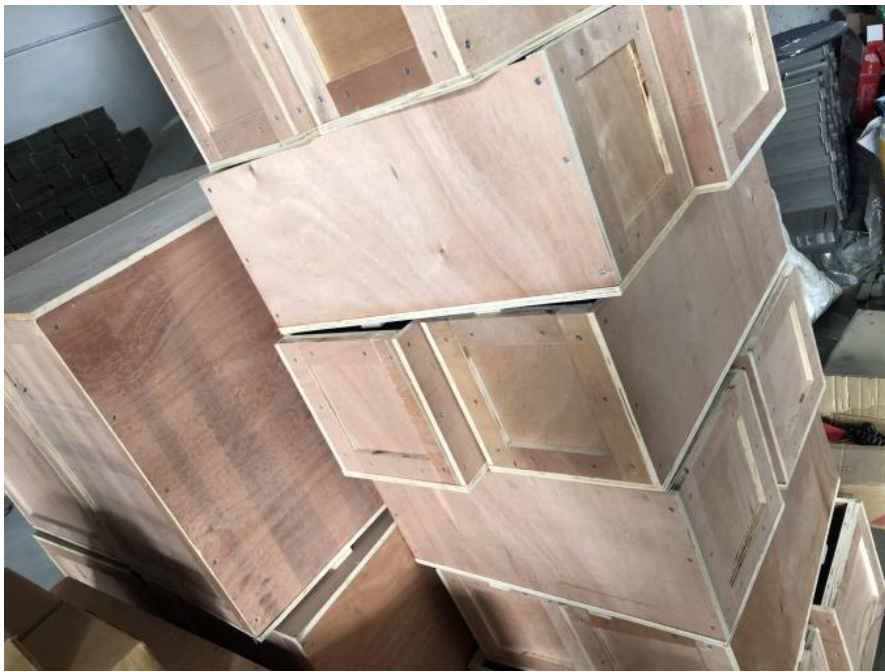
## Company Profile





Bee Star is the one-stop shop for beekeeping equipment and supplies. Our wide arrange of categories and product diversity, together with our competitive prices, allow us to satisfy our clients different demands, such as our clients in South America or Europe, and bring them to a very efficient experience. The heart of our company is located in the city of Chengdu, in China, where our experienced team sets out the best service to our customers; obtaining the best prices, performing regular quality checks on the products, and obtaining the necessary documents to facilitate the entrance of the goods to your country. We are proud of our way to do business and the good relationships that this allowed us to build with our customers all over the world. Do not hesitate to contact us, we are looking forward to assist you!

## Workshop



Our Advantages

## | OUR ADVANTAGE |



### QUALITY ASSURANCE

We have carried out strict inspection of every part and product, trying to have no quality problems in the hands of customers.



### GOOD SERVICE

Answer the customer's question within 8 hours, and the service engineer will be on standby 24 hours a day.

01

02

04

03



### PRICE ADVANTAGE

Factory direct sales, no middlemen price difference.



### RICH EXPERIENCE

The products are sold to more than 20 provinces, cities and autonomous regions in China and exported to dozens of countries in Africa and Southeast Asia.

### F.A.Q.

1. Are You Factory/Manufacturer or Trading Company?

We are a factory for beekeeping products in China with over 10 years experience. You can trust the quality and price of our products.

2. Do You Offer OEM/ODM Service?

Yes, we have a rich experience in offering OEM/ODM service in some of our products. Design service offered. Buyer label offered.

3. What is your MOQ? Can we get a small order for the first time?

Of course, you can. But we can't send small quantity by sea, so the price will be a little higher than larger quantity.

4. How About the Shipping Cost?

If the order is not large, we can send goods to you through air or express shipping methods such as FEDEX or DHL. If your order is large, we will send it to you by sea. Once the order is placed, we will quote the price to you. Generally, we always choose the most price-efficient option for you!



**BEE STAR TO GLORIFY YOUR WONDERFUL HONEY LIFE**



0086 18582997231



cherrybeekeeping@myldhoney.com



bee-keepingequipment.com

No. 21, 3rd Floor, Building 1, No. 888 Jilong Road, Chengdu High tech Zone, China